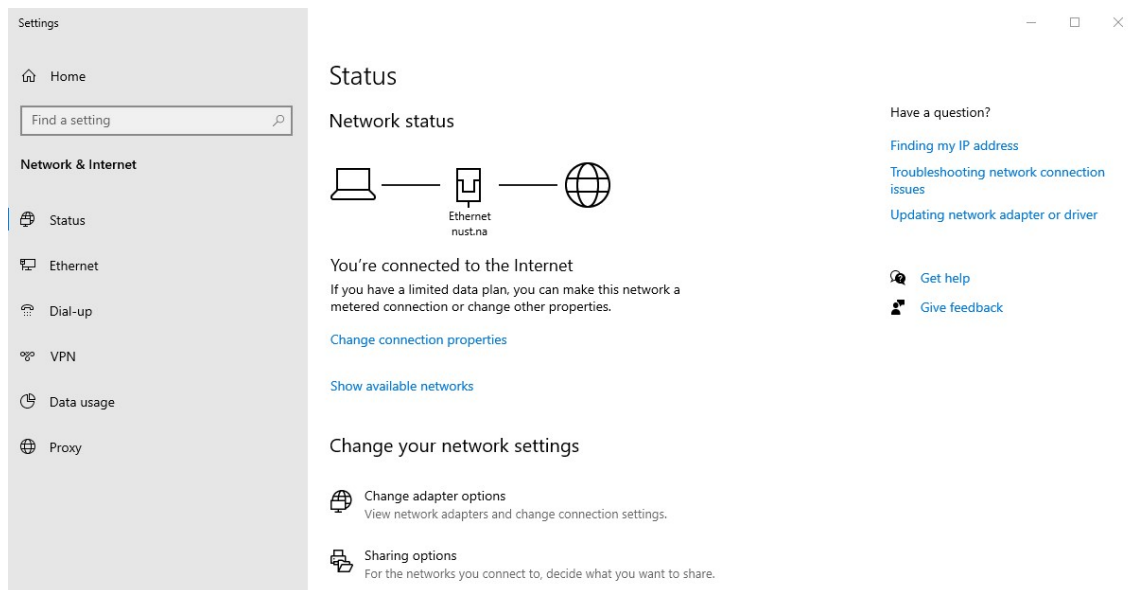




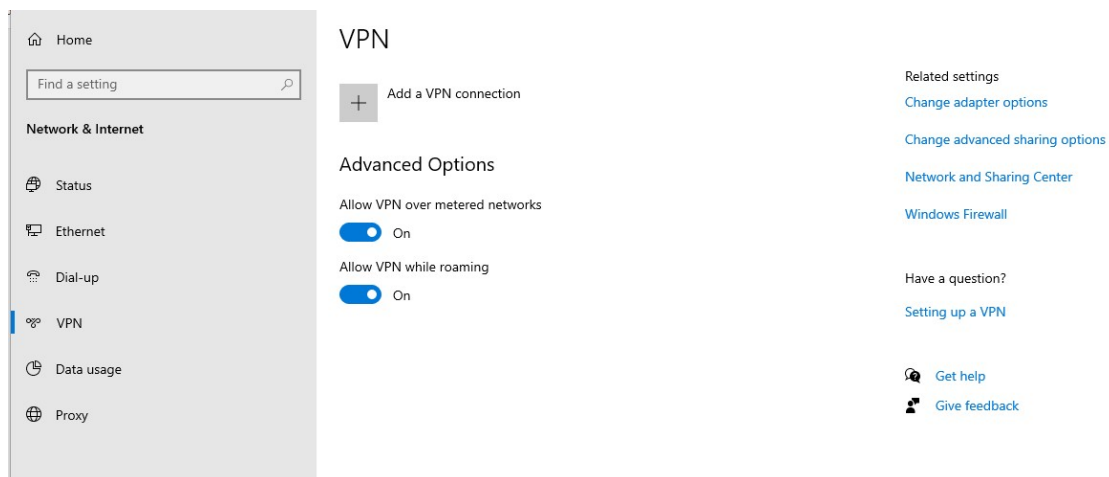
Virtual Private Network (VPN) – Windows 10



1. Right click on the network icon in the system tray (*bottom right corner of your taskbar*)
2. Click on 'Open Network & Internet settings'




3. Click on **VPN** located on the left side panel and continue to the next page



4. Click on + symbol in front of **Add a VPN connection**

VPN

 Add a VPN connection

Advanced Options

Allow VPN over metered networks

On

Allow VPN while roaming

On

Related settings

[Change adapter options](#)

[Change advanced sharing options](#)

[Network and Sharing Center](#)

[Windows Firewall](#)

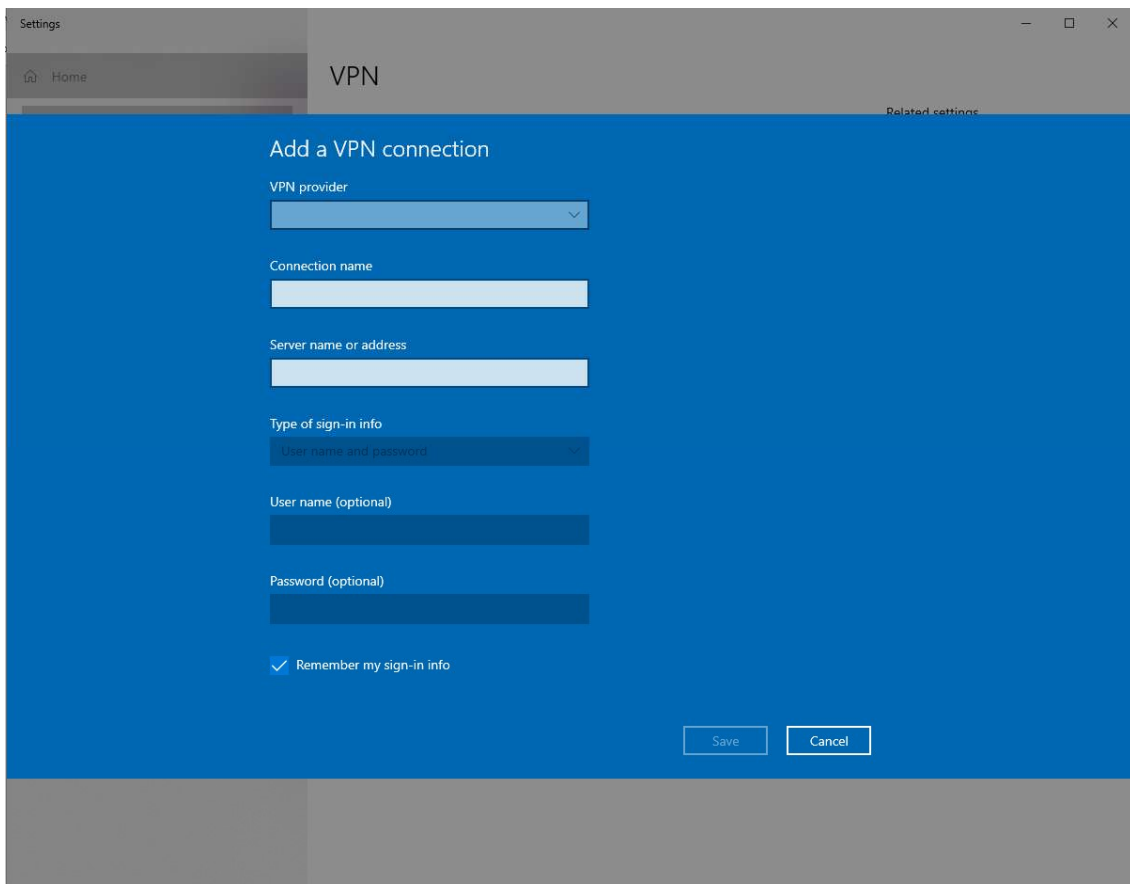
Have a question?

[Setting up a VPN](#)

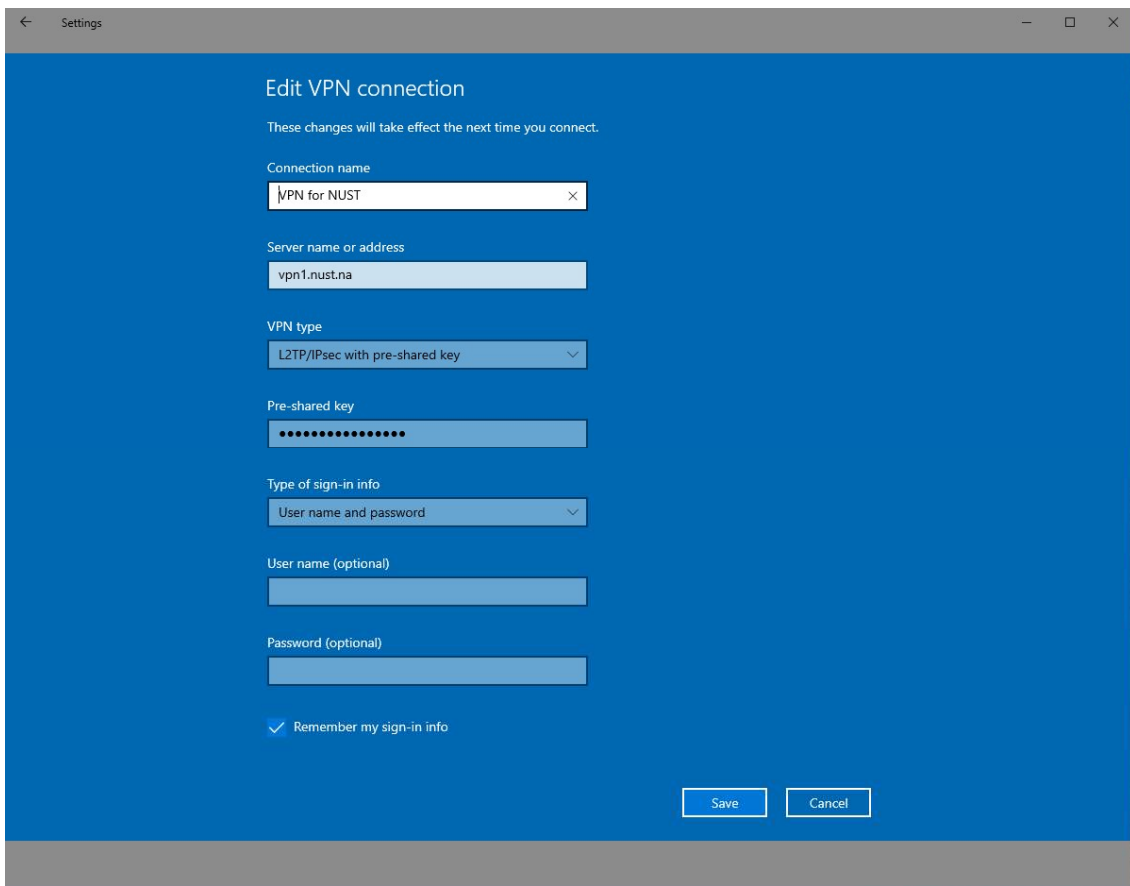
 [Get help](#)

 [Give feedback](#)

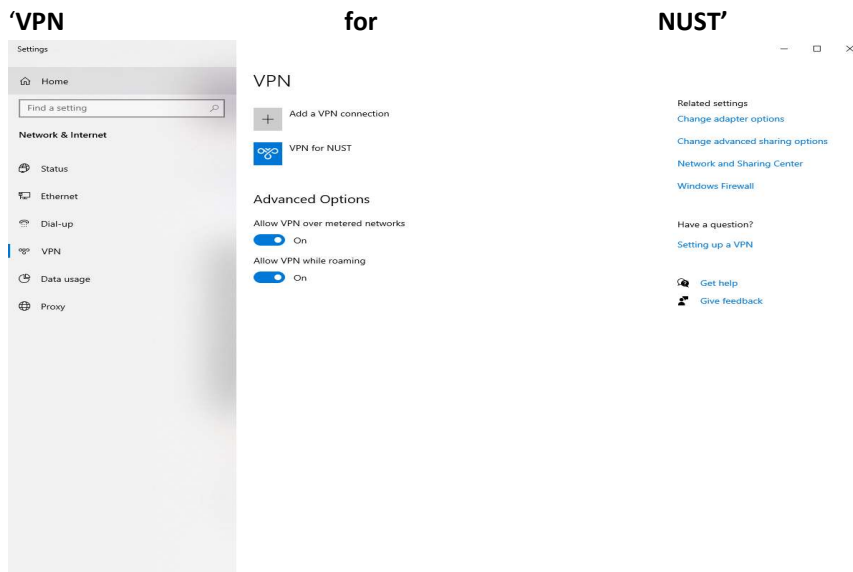
A blue screen wizard will appear



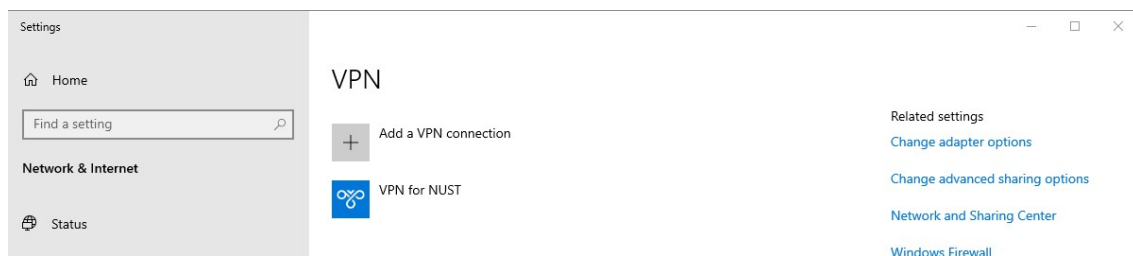
5. Complete as shown below (The Pre-shared key is **vpn**) and **Save**.




6. The VPN wizard will close, and you will be returned to the settings window, and you will notice the connection.



Close the settings window (by clicking on the x in the top right corner)



To open and access the VPN, left click the 'network icon'  and you will see the “**VPN for NUST**” connection.

Click on **VPN for NUST** followed by ‘Connect’ highlighted in blue.

An authentication window will appear. Enter your NUST staff username and password. Click **OK**. Once successfully authenticated you will be able to access the following: the ITS (back-office) and staff intranet.

For assistance, please contact the ICT Helpdesk:

Telephone: +264 61 207 2484
Cell + WhatsApp +264 81 249 7885
E-mail: icthelpdesk@nust.na
